

Update Guide for the Broadcast Pix 2ME Panel



November 16, 2008

This installation should take between 1-5 minutes.

Instructions



1. After downloading the update file from the Broadcast Pix website and moving it (if necessary) to your Broadcast Pix Workstation, close all programs and then extract the files from within the ZIP file. To do this, right-click on the zip file and select **Extract All**. (See *Figure 1*)

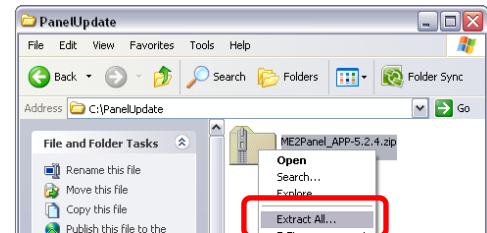
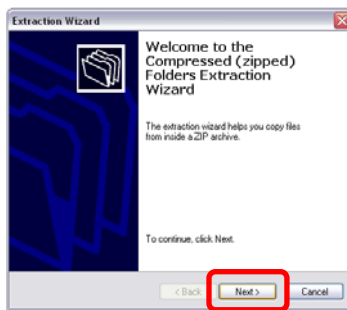
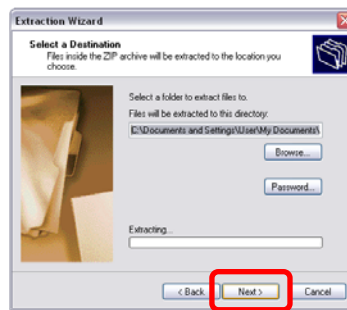


Figure 1- Extracting Files

2. Click **Next**.



3. Click **Next**.



4. Click **Finish**.

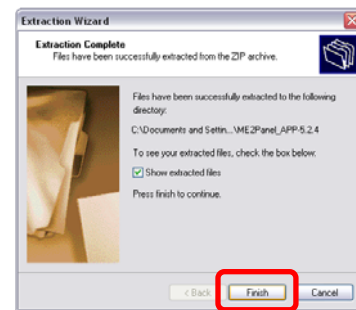


Figure 2- Extraction Wizards

5. Open **AutoUpdate.exe**.

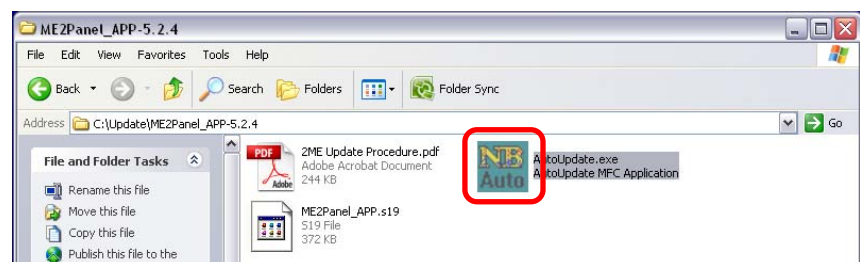


Figure 3- Run AutoUpdate.exe

6. When this application opens, it should recognize the IP Address of your 2ME Panel automatically through the Ethernet Cable connecting them. You should be seeing a window that looks like *Figure 4*.

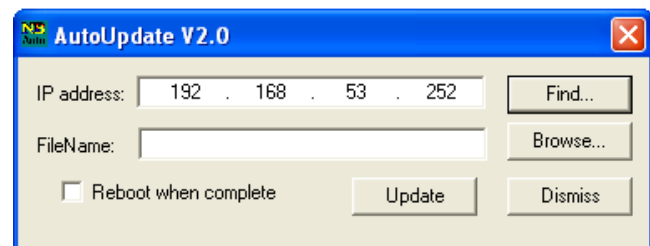


Figure 4- Auto Update Application

Instructions

7. If you do not see an IP Address in the IP Address field, then click the **Find...** button and the “Find Netburners” window will open. If your panel is connected to the workstation through an ethernet cable (it may also connect through a small network hub provided to you upon purchase), then you should see it listed in this window. If you do not, check your connections and click **Search Again**. When you find your 2ME Panel, click **OK** to close the window. *(See Figure 5)*

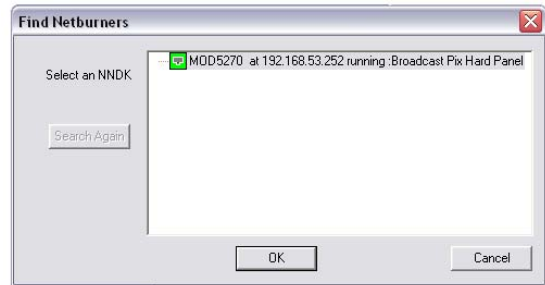


Figure 5- Find Panel

8. Next, click the **Browse** button on the Auto Update Application and select the “ME2Panel_APP.s19” file and click **Open**. If you do not see the file right when it opens, you may have to browse to the file where you extracted it originally. *(See Figure 6)*

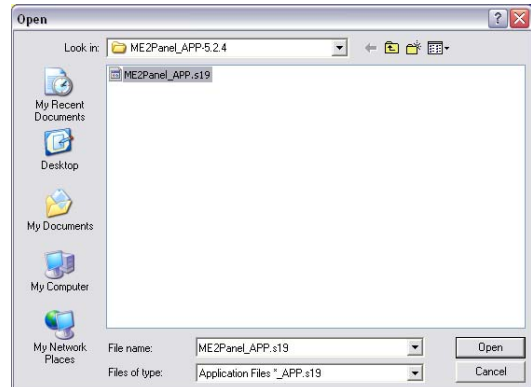


Figure 6- Select Update File

9. Finally, put a check in the “**Reboot when complete**” checkbox.

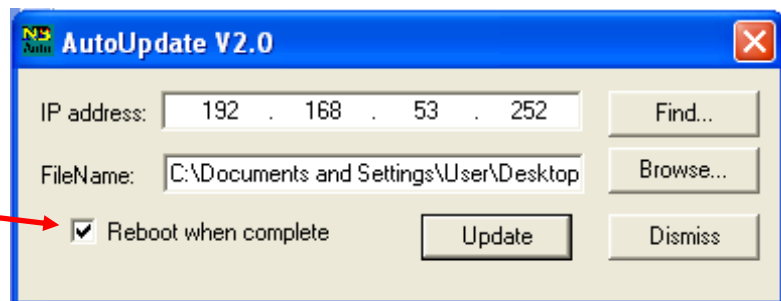


Figure 7- Ready to Update and Reboot

10. Now that your Auto Update Application looks like *Figure 7*, you are ready to update your 2ME Panel. Simply click the **Update** button on the application and wait until you see the 2ME Panel restart. This should take only a few seconds. And if you’re not watching it, you might easily miss it restarting; don’t worry if you don’t see it happen.

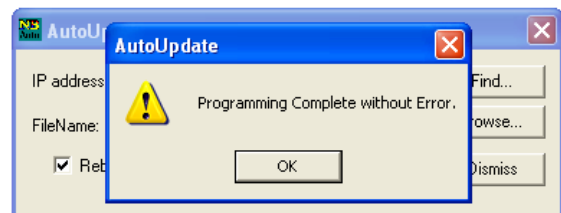


Figure 8- Update Complete

Instructions

To confirm that you have updated the panel correctly:

1. With the Broadcast Pix Application NOT running, push the **Setup + Test** button. (below the joystick)
2. On the Pix-Pad below, select **Show Date**. Your current firmware version will show on the Top Panel readout screen.



3. The final step in this upgrade is to make sure that your software knows that we upgraded the panel. Open the Broadcast Pix Switcher application from the Desktop.

4. Load a show, then go to “Setup>Engineering Settings” and check to make sure there is a checkmark next to “Dec 05 or later panel code” and May 07 or later panel code.”

(See Figure 22)

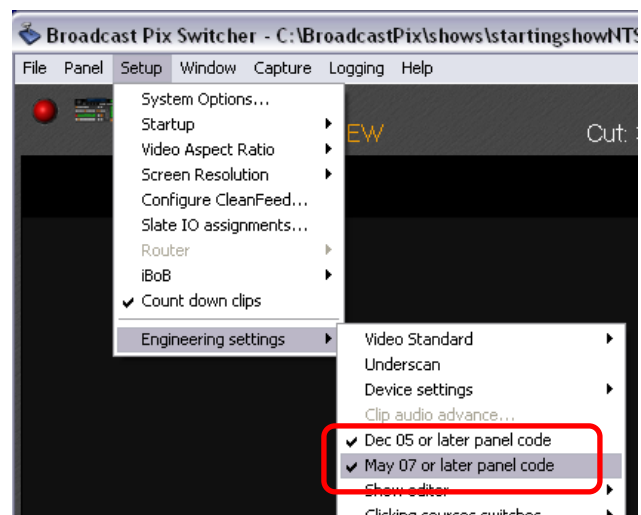


Figure 9 - Panel Code Software Checkmarks

If you have further questions, please contact our Technical Support Team.

Appendix A

Corporate Information



Broadcast Pix, Inc.

3 Federal Street
Billerica MA, 01821
Phone - (978) 600-1100
www.BroadcastPix.com

Technical Support

Phone - (978) 600-1098
Email - Support@BroadcastPix.com

For more information and software and firmware upgrades visit our website at:
www.BroadcastPix.com/Support.html