



Broadcast Pix

Captivate with live video in Entertainment Venues

Entertainment Venues are discovering that Broadcast Pix Slate integrated live video production systems create highly compelling live video, much more cost effectively and easily than conventional studios. Slate is popular throughout entertainment events and arenas, including The Texas Rangers, the University of Southern California's Football Stadium, and the Sundance Film Festival.

Slate is a live integrated production system, with switcher, HD clip and graphic stores, Inscribe CG, comprehensive multi-view, Fluent workflow software, aspect conversion, and multi-definition format conversion. Fluent streamlines production workflow by integrating video, files and data. Fluent Watch-Folders gracefully import clips and graphics from the rest of your studio. Slate saves 70% of the cost of a conventional control room, and saves even more on staffing, as a single operator can create compelling live video. Slate saves again when it easily upgrades to 3G 1080p, the future of HD production. Join over 1,200 studios, in over 70 countries that use Broadcast Pix systems.



CT Rig on World Tour with the band REM, Argentina

Live Integrated Production System

Features

- Production Switcher Classic program/preview layout, with 3 to 6 pristine keys, each with a DVE for Picture in Picture
- Multi-view monitor Unprecedented monitoring of program, preview, sources, clips, graphics, keys, file names, clocks, counters and tally
- HD/SD Clip Stores Up to 2 channels and 200 hours of QuickTime clips, plus animations from Inscribe, Aftereffects, ArtBeats, etc.
- Character Generator Broadcast quality Inscribe CG with animations
- HD/SD Graphic Stores 5 channels of graphics for CG, jpg, bmp, tga, png
- Multi-Definition Simultaneous HD-SDI 1080i, 720p, SD-SDI, Analog, DVI, VGA
- 16:9 & 4:3 Input and output both simultaneously
- Camera Control Control pan/tilt/zoom, presets and camera settings like white balance for Sony, Panasonic and Hitachi cameras
- Fluent Watch-Folders Streamline import of HD/SD clips and graphics from anywhere in your studio, even during a live production
- Fluent Macros Only Slate memories combine switcher with clip & graphic files
- CG Connect Connect a database to an on-air CG, to automate graphics
- Easy to Operate Much easier to learn and run than a conventional control room
- Strong Support Call production professionals at Broadcast Pix
- 3G 1080p Upgradeable Future proof. Easily upgrade to native 3G 1080p, the future of HD production

Slate Models



Slate 100



Slate 1000, 2100, 3000



Slate 5000

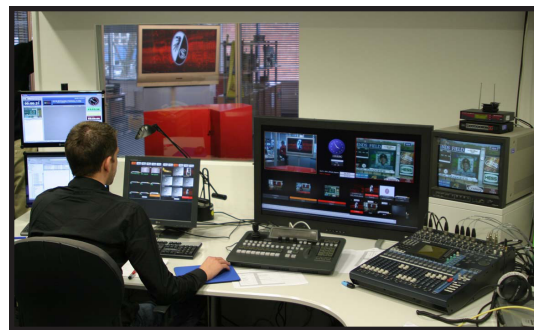
Create Compelling Live Video

Broadcast Pix Customers...

DSF Deutsches SportFernsehen

DSF Deutsches SportFernsehen, a sports broadcast network in Germany, is using its Slate™ 2100 switcher for live, high-quality production of its new sports news program, DSF Aktuell. The Slate 2100, installed by German systems integrators CAM GmbH, and Videocation Fernseh-Systeme-GmbH, is the centerpiece of a new production studio built specifically to produce DSF Aktuell and future programs. The Slate 2100 replaces the network's aging legacy production control technology at half the price of a conventional new system.

"The Broadcast Pix Slate 2100 provides our staff with the highly integrated automation in a single, compact platform we required to effectively produce our new sports program," said Eisele. "At half the cost of a traditional production system, the Slate 2100 provides all the tools we need and seamlessly integrates with our Avid Liquid editing pool and DDR payout. The breakout box included with the system provides the additional inputs we need for our cameras and source equipment, creating a clear and uncluttered end-to-end production workflow."



Slate 2100

Germany

Tours by Sloan - The Donnie & Marie Show

Tours by Sloan, a live event production company based in Las Vegas, Nevada has selected its Slate 5016HD switcher for use during live performances by Donny & Marie Osmond at the Flamingo Hotel & Casino in Las Vegas. The Slate 5016HD was first used for the performance during its limited engagement at the Hollywood Theatre in the MGM Grand Casino also in Las Vegas.

Tours by Sloan live event video director Simon Greaves says the Slate 5016 comes with a set of ideal features for this particular production. Immediate access to all media including clips and frame stores ranks high, but multi-format capability was of greatest importance to Greaves. "I'm dealing with 4X3 and 16X9 screens for this show, which can present a challenge when setting outputs with other switchers. The Slate 5016 has built in functionality to instantly crop or stretch an image as needed. I can also select parameters beforehand to specifically designate how I want it to handle each format. I don't have to worry about images being distorted."

"We are definitely pushing this equipment hard and exploiting its output capabilities – putting one image across three screens and the like. I can honestly say that we are achieving with this system what most people would with an Encore or Spyder (video layering system). I can create a highly dynamic show on a realistic budget."



Slate 5016

Las Vegas, NV

Premiere Entertainment Network or Maimi Heat

XXXXXXX



Slate 5032

Los Angeles, CA

Rochester Red Wings

The Rochester Red Wings, Triple A affiliate of the Minnesota Twins Major League baseball team recently completed their 2007 season with a 77-64 record. Red Wings fans were treated this year to live telecasts of the team in action for the first time exclusively on Time Warner Cable. The telecasts were made possible with the addition of Broadcast Pix's Slate 2100 switcher. The Broadcast Pix Slate 2100 system integrates a production switcher, production control panel, Inscriber CG, clip store, and multi-view monitoring, among other functions, in a single workstation-based system.

The Red Wings Game Day production team previously employed an analog switcher and two-camera system which displayed field action on a video scoreboard. Advertisements from sponsors were played through a DVD player during inning breaks and transmitted through an in-house system to the scoreboard and ballpark suites. "While the setup we had was fine, I'd always wanted to do more with our in-house productions," said Coltoniak. "The temptation to go overboard with equipment was there, but we needed to be practical and make responsible choices. We were able to get the Slate 2100 integrated and up and running fairly quickly. What's more, *I have all the flexibility I need to produce a great show for the fans in the stadium and at home.*"



Slate 2100

Rochester, NY

North & Central America Office:
Main Office: 978-600-1100
Toll free # 866-914-9484

South America Office:
+ 55.21.2541.3022
skype - vepskype

European Office (EAME):
+ 31.297.385.940
skype - davidhughes2504

Asia Pacific RIM Office:
+ 001.909.720.1356
skype - dbreck

www.broadcastpix.com

© 2010 Broadcast Pix, Slate, and Fluent are Trademarks of Broadcast Pix, Inc. Specifications subject to change.